

SecureAuth Certificate Installer for Windows

Introduction

Use this guide to utilize the Certificate Installer, which places the SecureAuth Certificate Authority (CA) intermediate and root certificates onto a Windows workstation. For more information about the certificates, see the SecureAuth support document [SecureAuth CA Public Certificates](#).

Supported Operating Systems

Windows Vista

Windows 7

Windows 8 / 8.1

Windows 10

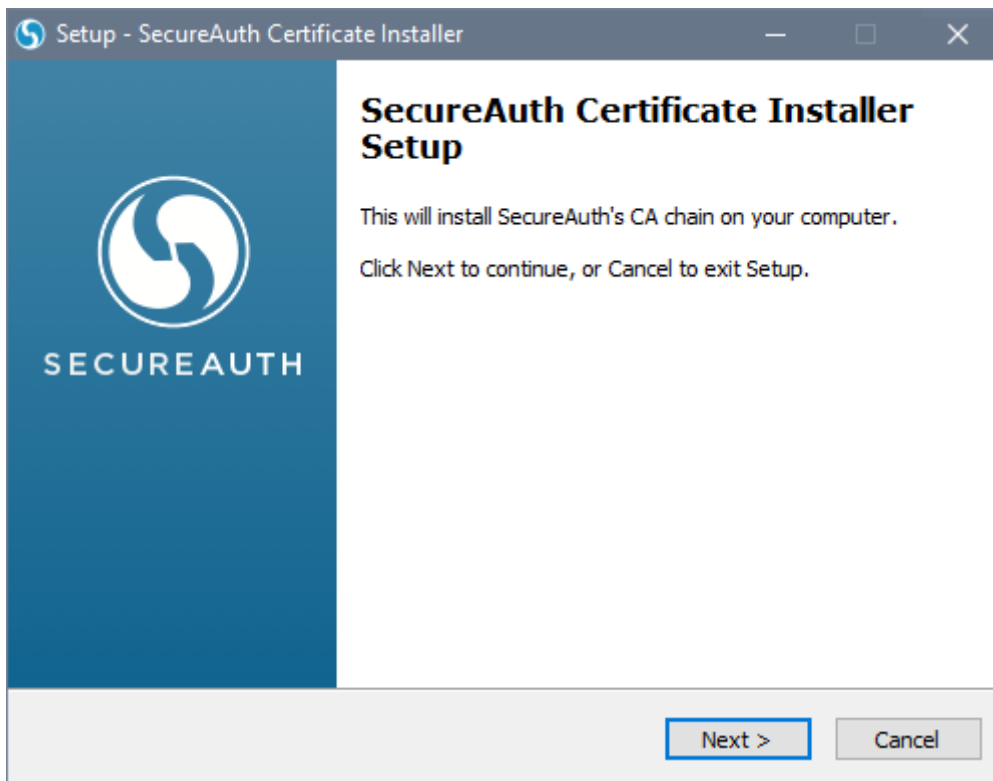
Discussion

Disclaimer

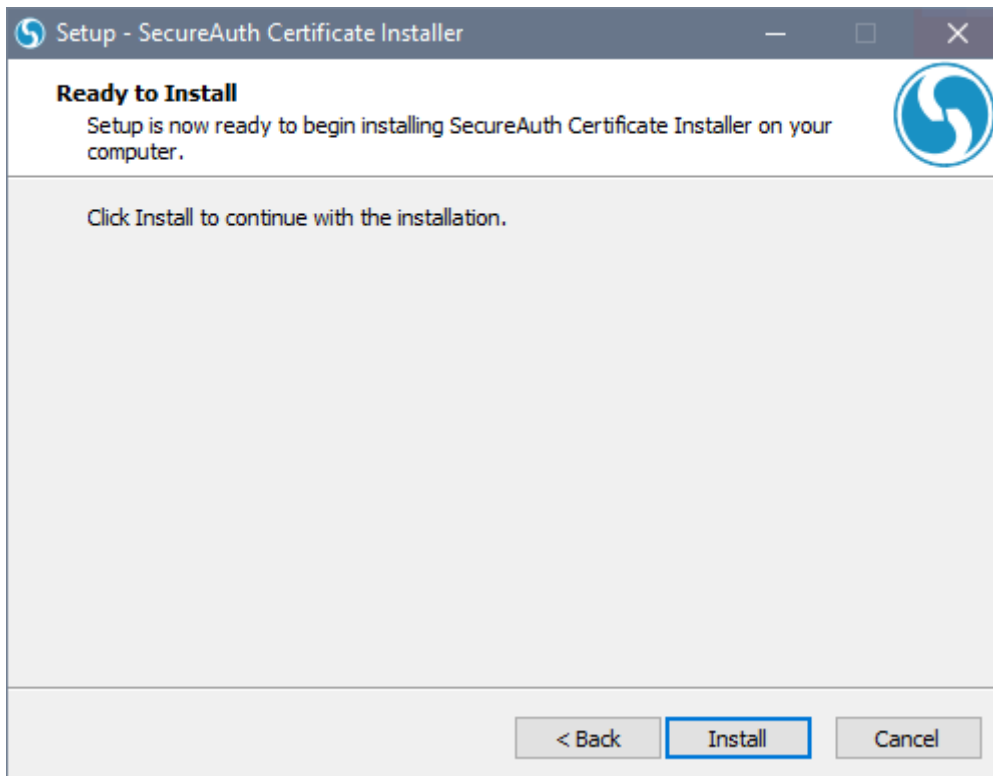
THIS SOFTWARE IS PROVIDED "AS IS" AND SECUREAUTH CORPORATION DISCLAIMS ALL WARRANTIES WITH REGARD TO THIS SOFTWARE INCLUDING ALL IMPLIED WARRANTIES OF MERCHANTABILITY AND FITNESS. IN NO EVENT SHALL SECUREAUTH CORPORATION BE LIABLE FOR ANY SPECIAL, DIRECT, INDIRECT, OR CONSEQUENTIAL DAMAGES OR ANY DAMAGES WHATSOEVER RESULTING FROM LOSS OF USE, DATA OR PROFITS, WHETHER IN AN ACTION OF CONTRACT, NEGLIGENCE OR OTHER TORTIOUS ACTION, ARISING OUT OF OR IN CONNECTION WITH THE USE OR PERFORMANCE OF THIS SOFTWARE

Installing the Certificates

1. Download the [SecureAuth Certificate Installer for Windows](#) from the SecureAuth Downloads Page
2. Navigate to the download, right-click on the archive, select **Properties**, and view the **General tab**
3. If the **Unblock** button appears on the tab, click it and then press **OK** to dismiss the Properties window
4. Right-click the archive file again and select **Extract All**
5. Navigate to the SecureAuth Certificate Installer and launch it
6. The welcome screen appears – click **Next** to begin the installation



7. Once ready to install, click **Install**



8. When the install process is complete, click the **Finish** button to exit the installer



SECUREAUTH

Completing the SecureAuth Certificate Installer Setup Wizard

Setup has finished installing SecureAuth Certificate Installer on your computer.

Click Finish to exit Setup.

Finish